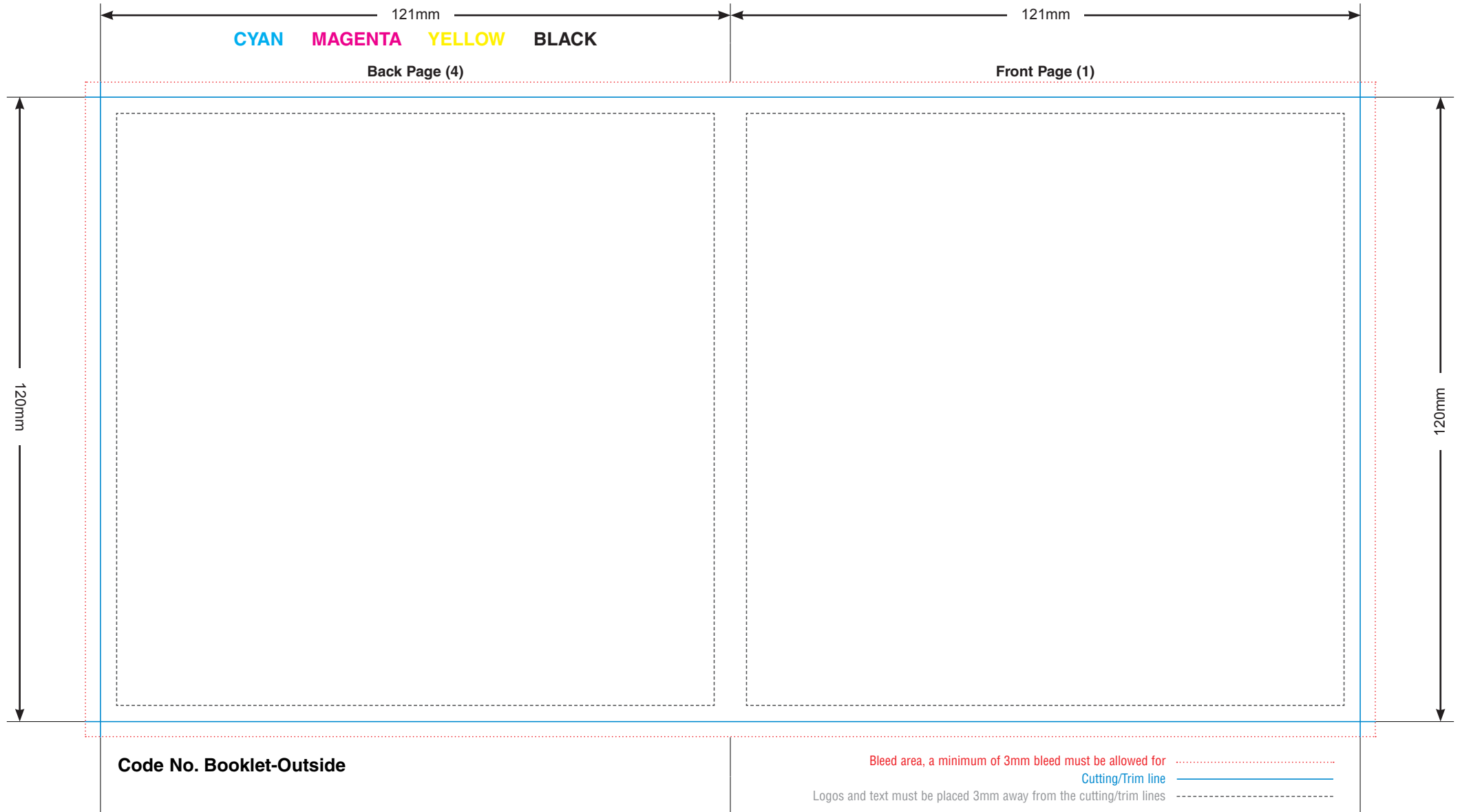


ICC Duplication, Regency Mews, Silverdale Road, Eastbourne, East Sussex, BN20 7AB.

T +44 (0) 1323 647880 **F** +44 (0) 1323 643095
E info@iccduplication.co.uk **W** www.iccduplication.co.uk



ICC Duplication, Regency Mews, Silverdale Road, Eastbourne, East Sussex, BN20 7AB.

T +44 (0) 1323 647880 **F** +44 (0) 1323 643095
E info@iccduplication.co.uk **W** www.iccduplication.co.uk



ICC Duplication, Regency Mews, Silverdale Road, Eastbourne, East Sussex, BN20 7AB.

T +44 (0) 1323 647880 **F** +44 (0) 1323 643095
E info@iccduplication.co.uk **W** www.iccduplication.co.uk

ICC DUPLICATION FTP DETAILS

ftp://files.iccduplication.co.uk

Log on with the following details:-

Client Account Username: duplication

Client Account Password: arnold

- Please upload files to the root directory in a clearly marked folder with your client and job reference.
- If access is denied (user anonymous) please choose Login As from the File menu in your browser and re-submit the username and password above.
- Please ZIP or STUFF all files into a single file before uploading.
- Please let us know once your files have been uploaded to avoid any delays.
- Low-res PDF proofs should be supplied for artwork reference only – we will require the original artwork files to work from.
- Our preferred file formats are Indesign (CS2) - Quark Xpress (6.5) - Illustrator (CS2) - Photoshop.
(Other formats are also supported such as CorelDraw Version 10 and Freehand).