



ICC Duplication, Regency Mews, Silverdale Road, Eastbourne, East Sussex, BN20 7AB.

T +44 (0) 1323 647880 **F** +44 (0) 1323 643095
E info@iccduplication.co.uk **W** www.iccduplication.co.uk

ICC DUPLICATION FTP DETAILS

ftp://files.iccduplication.co.uk

Log on with the following details:-

Client Account Username: duplication

Client Account Password: arnold

- Please upload files to the root directory in a clearly marked folder with your client and job reference.
- If access is denied (user anonymous) please choose Login As from the File menu in your browser and re-submit the username and password above.
- Please ZIP or STUFF all files into a single file before uploading.
- Please let us know once your files have been uploaded to avoid any delays.
- Low-res PDF proofs should be supplied for artwork reference only – we will require the original artwork files to work from.
- Our preferred file formats are Indesign (CS2) - Quark Xpress (6.5) - Illustrator (CS2) - Photoshop.
(Other formats are also supported such as CorelDraw Version 10 and Freehand).

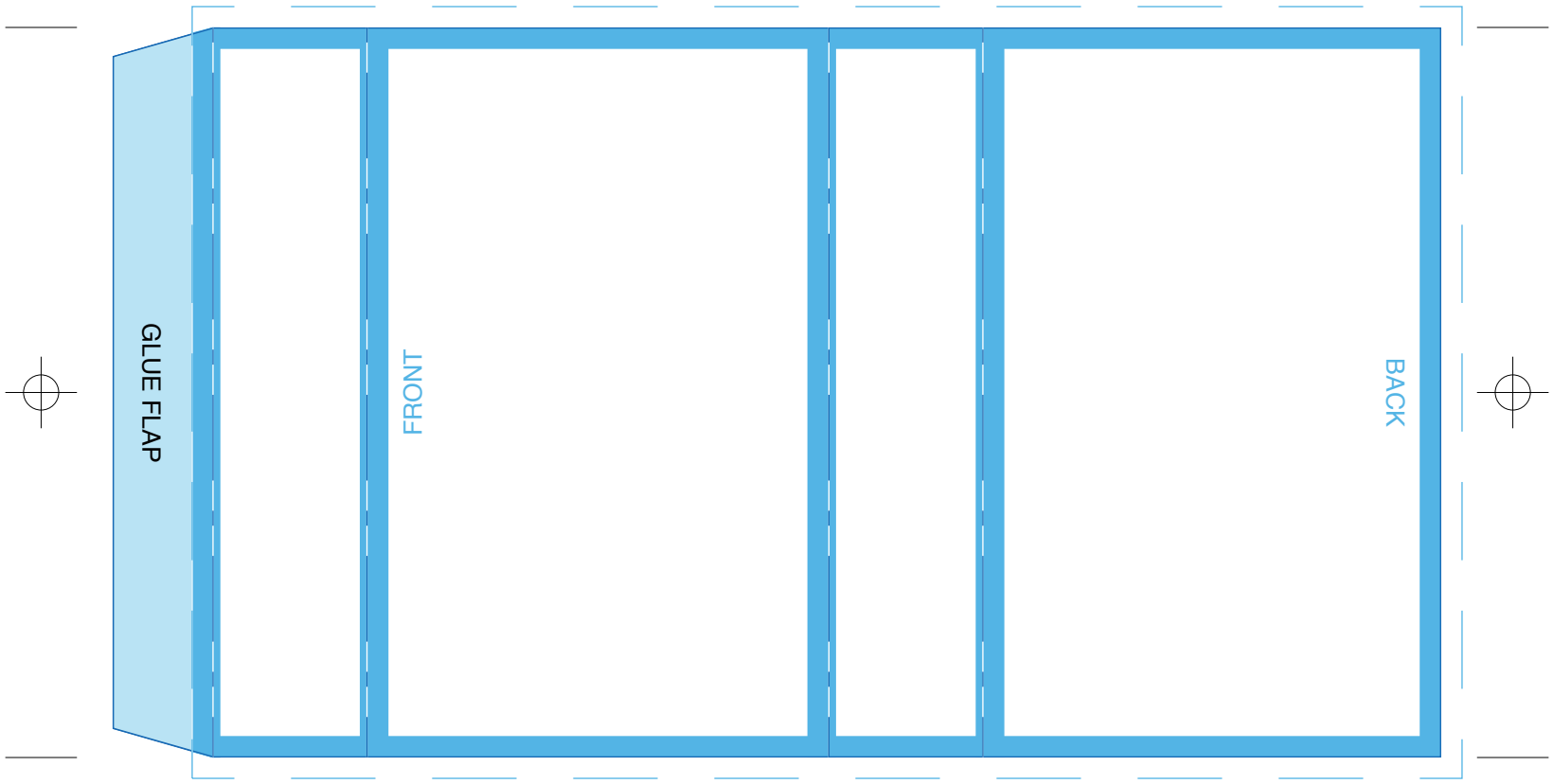
Key:

- No text area
- No print area
- Bleed
- Trim
- Fold

CTP Template: MC_SLP14
Music Cassette Slipcase to hold 2 cassettes without cases

Customer
Catalogue No.
Job Title

- COLOURS**
CYAN
MAGENTA
YELLOW
BLACK



PLEASE NOTE THIS TEMPLATE HAS BEEN CREATED USING SPECIFIC CO-ORDINATES REQUIRED FOR COMPUTER TO PLATE IMAGING AND IS NOT TO BE ALTERED, MOVED OR THE DOCUMENT SIZE CHANGED. ALL DIMENSIONS ARE IN MILLIMETRES. BLEED ALLOWANCE OF 3MM ON TRIMMED EDGES